

# Meeting Agenda

- Welcome, Introductions
- NOAA Project of Special Merit: Quick Info
  - PSM Proposal #1: DHHL Shoreline Guidance
    - Presentation
    - Discussion
  - PSM Proposal #2: Muliwai (estuary)  
Considerations for Watershed Restoration
    - Presentation
    - Discussion
- ORMP Updates and Announcements
- Next Steps and Housekeeping





## Project of Special Merit

- Basic Information
- Q & A

# NOAA Project of Special Merit

- Funding opportunity to develop projects that lead to improved coastal management through a *program change*.
- Only coastal management programs are eligible but can collaborate w/ local partners.
- Two (2) proposals up to \$250,000 for 18-months
- Proposals due: Dec/Jan; Start date: Oct. 1, 2023
- Example: Kōkua Monitoring Program

**WHAT IS A PROJECT OF SPECIAL MERIT (PSM)?**  
NOAA Annual Funding Competition

**Funding Amount:**

- Up to \$250,000 per proposal (match is encouraged, but not required)
- *Funds may cover:* project personnel costs, supplies, overhead/indirect costs, travel, equipment (pursuant to relevant OMB guidance), projects, studies and reports; and pass-through or contractual costs
- *Funds may NOT cover:* land acquisition, construction or in-the-ground projects

**Project Eligibility**

- Proposals must lead to a **program change** (see below)
- Must focus on one or more "priority enhancement areas"
  - Coastal hazards
  - Ocean resources
  - Public access
- Projects are encouraged to support principles of equity and inclusion

**What is a program change?**  
The development of new and innovative mechanisms to further improve coastal management strategies. Mechanisms include:

- A change to coastal zone boundaries; new or revised authorities, including statutes, regulations, enforceable policies, administrative decisions, executive orders, and memoranda of agreement/understanding;
- New or revised local coastal programs and implementing ordinances;
- New or revised coastal land acquisition, management, and restoration programs;
- New or revised Special Area Management Plans (SAMP) or plans for Areas of Particular Concern (APC), including enforceable policies and other necessary implementation mechanisms or criteria and procedures for designating and managing APCs;
- New or revised guidelines, procedures and policy documents that are formally adopted by a state or territory and provide specific interpretations of enforceable CZM program policies to applicants, local government and other agencies and will result in meaningful improvements in coastal resource management.

**Dates (approximate):**

- Proposals due in December/January
- Funding available October 1
- **18-month project period;** with possible 18-month extension

**Applicant Information:**

- Coastal Zone Management (CZM) programs only are eligible to **submit up to 2 proposals** per funding opportunity
- Proposals can be **collaborations between Hawaii CZM Program and other local partners.**

**How can a PSM accomplish a program change?**

- Project can be one phase/component that will contribute towards a program change
- Make it clear how your project will lead to the implementation of a mechanism that will improve coastal management. NOAA is specific in what they want (program change), but open in how you get there.

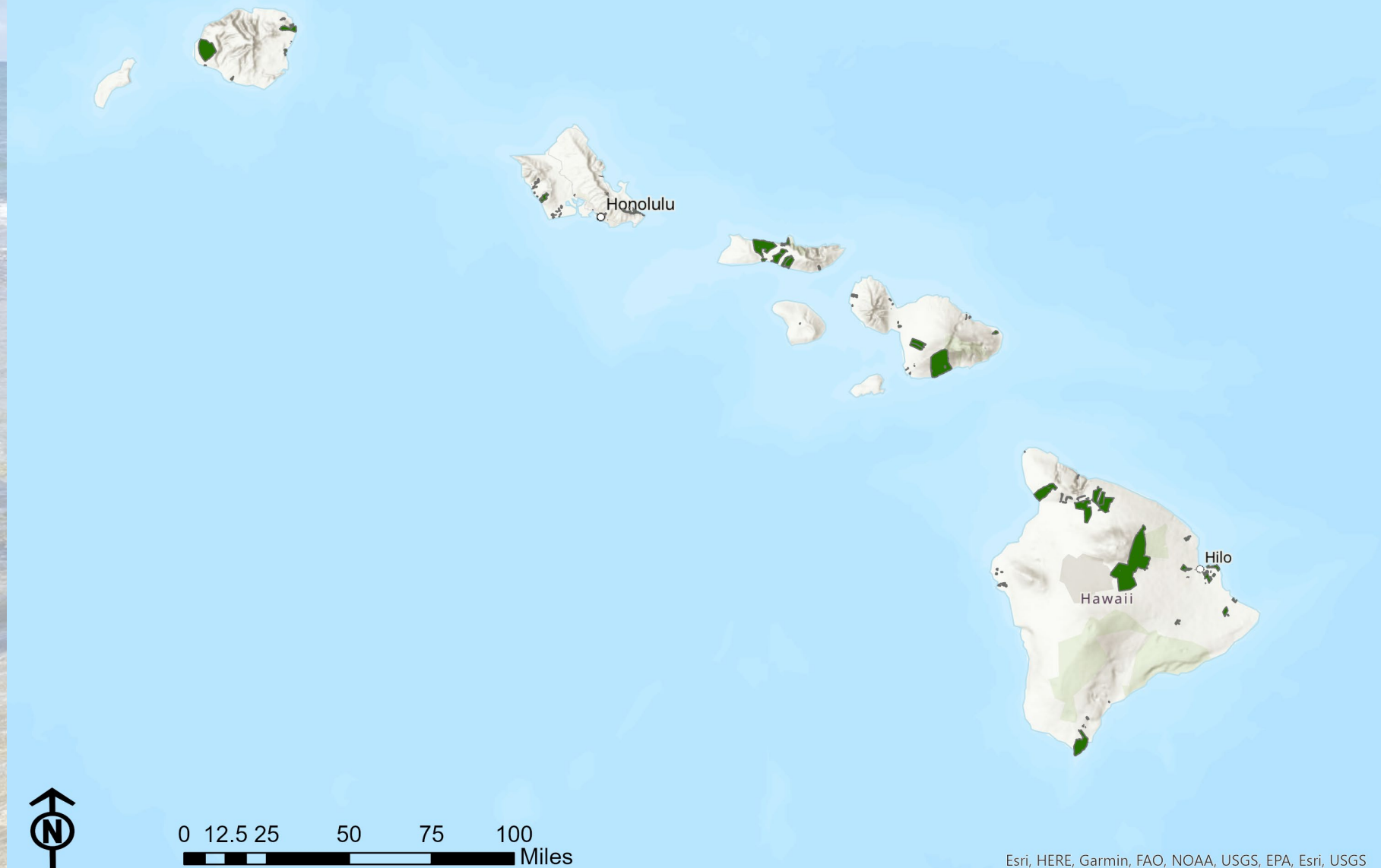


Project of Special Merit  
Proposal #1:

DHHL Shoreline Guidance



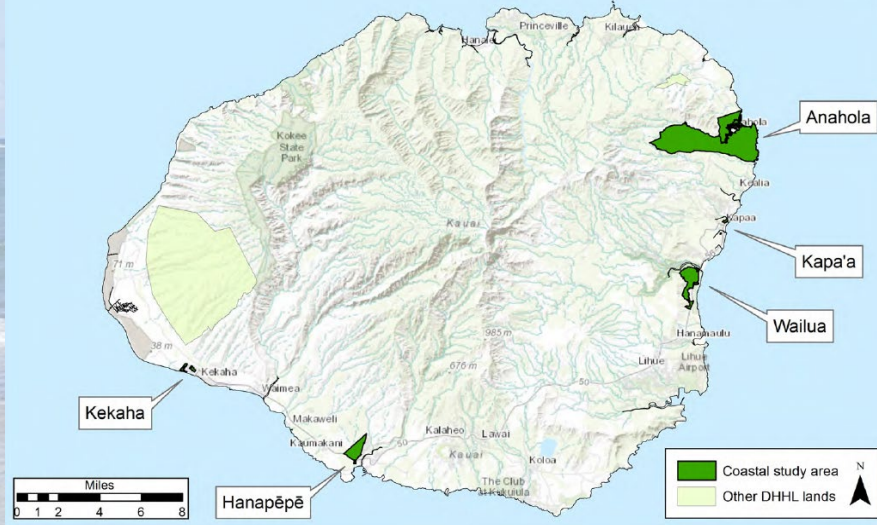
# DHHL Lands



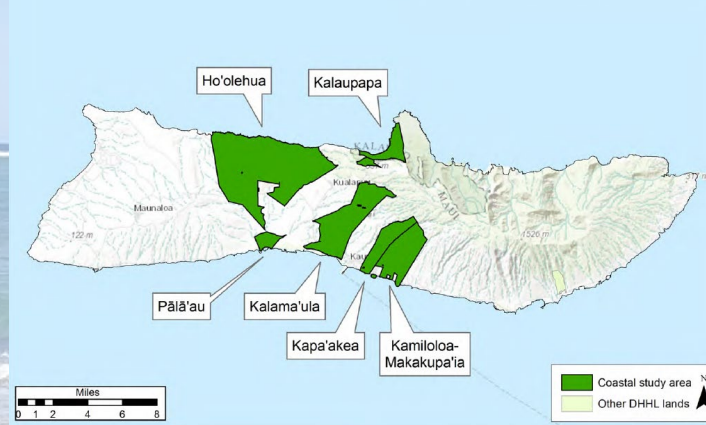


# DHHL Coastal Communities

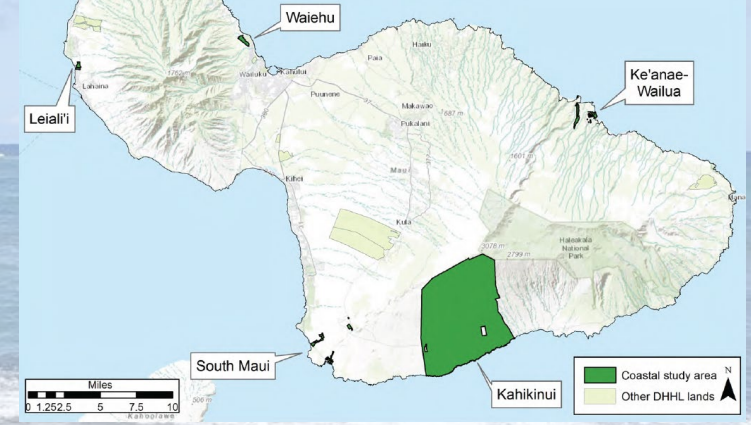
DHHL communities on Kaua'i



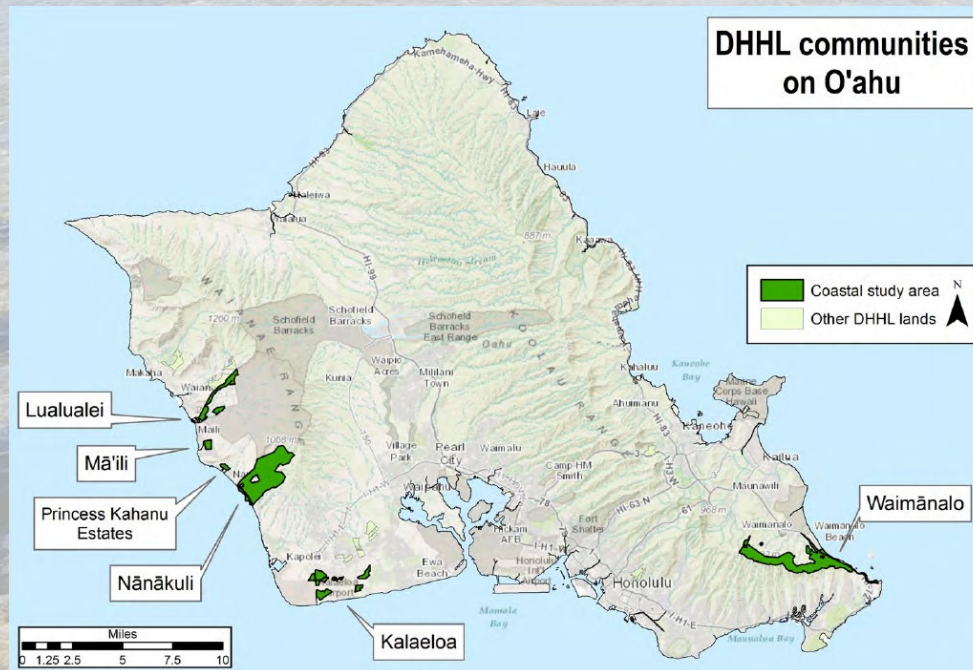
DHHL communities on Moloka'i



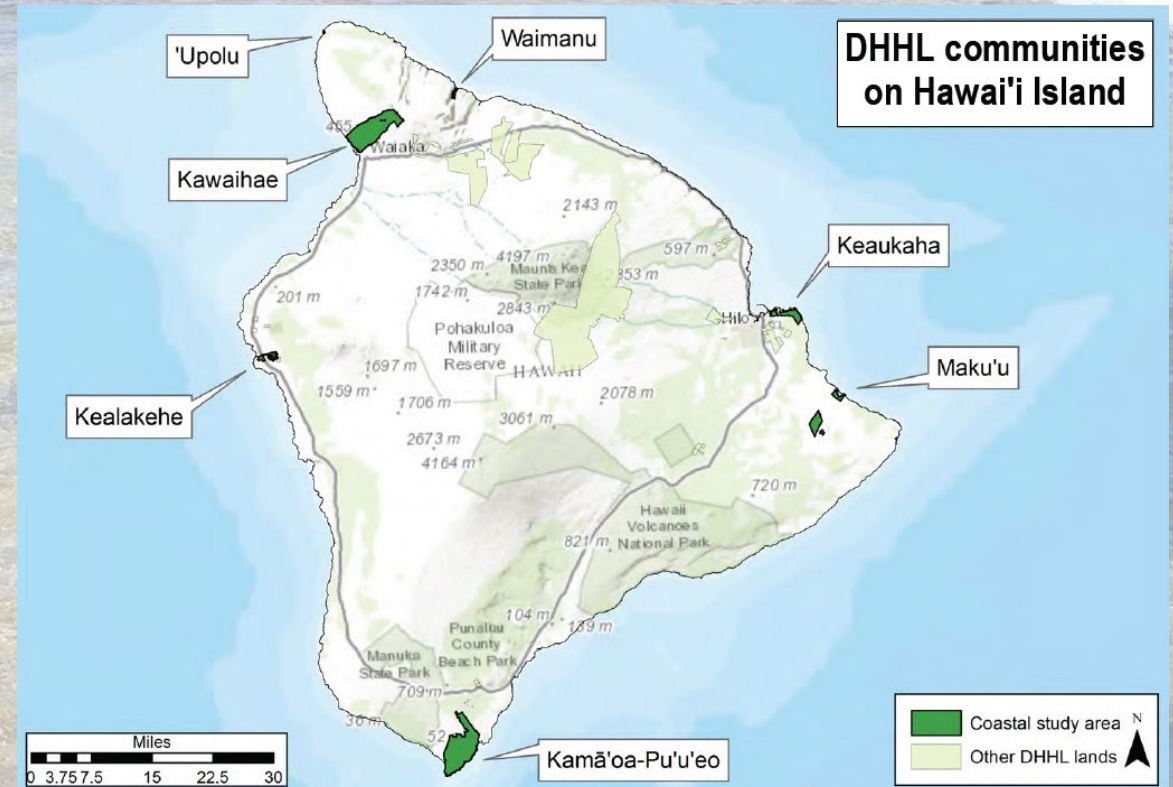
DHHL communities on Maui



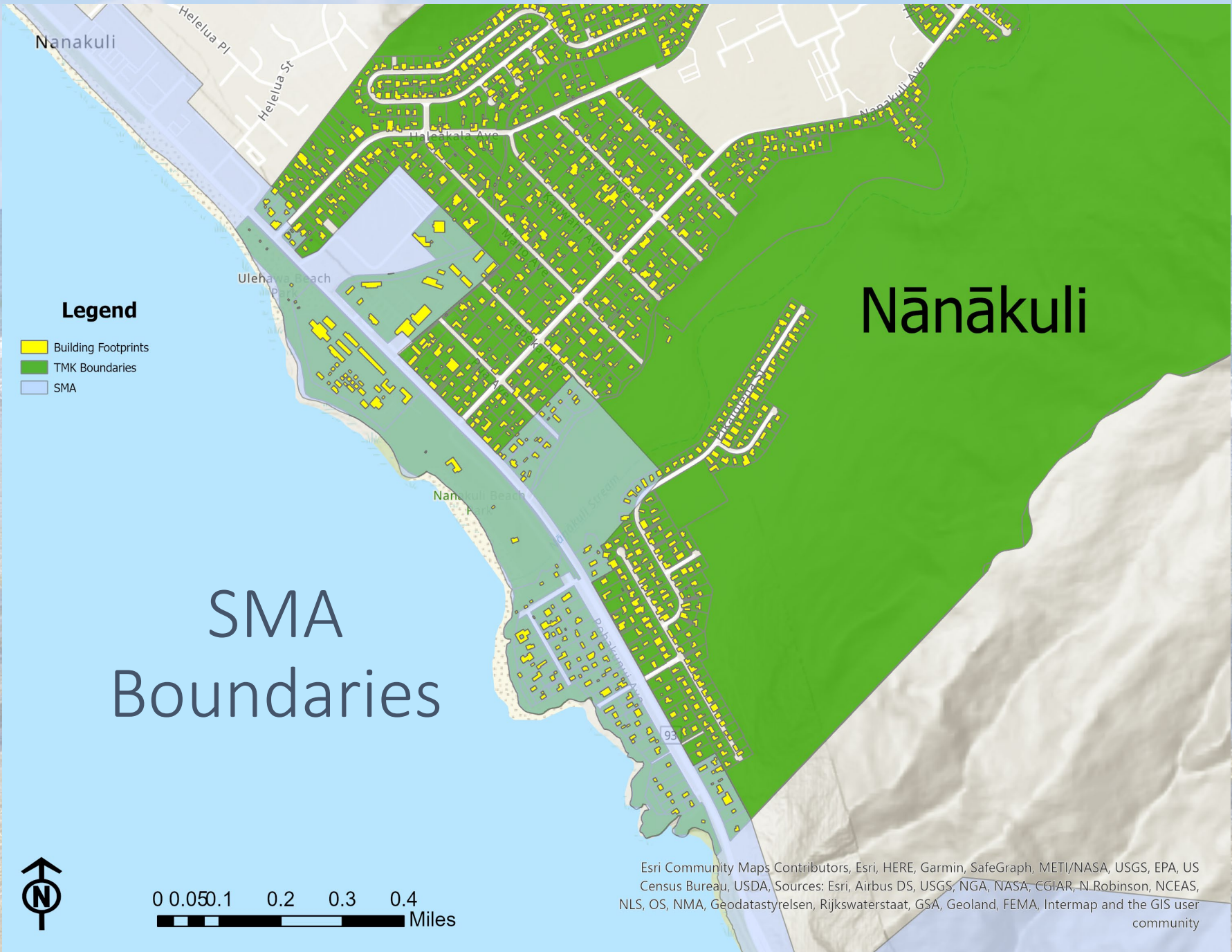
DHHL communities on O'ahu



DHHL communities on Hawai'i Island

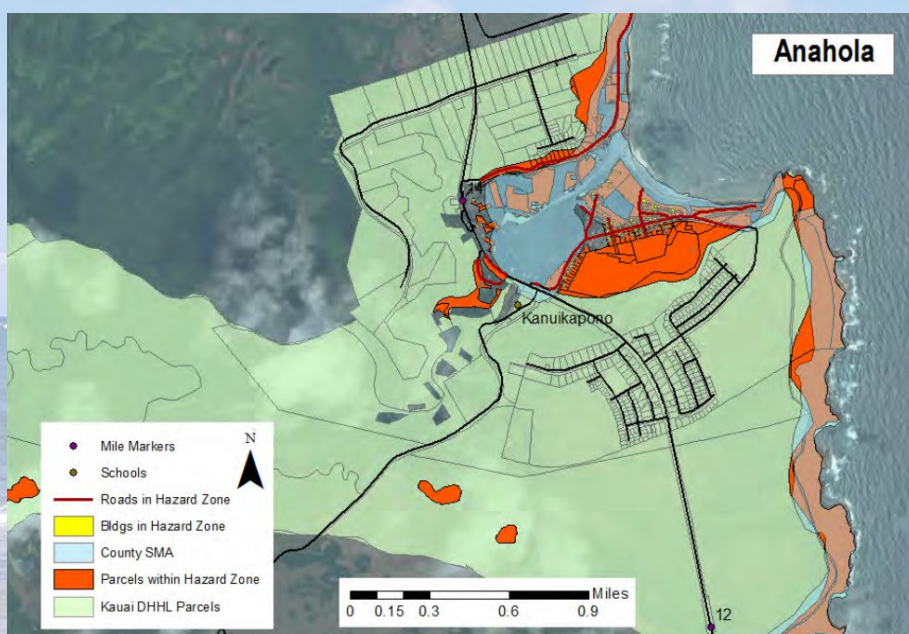




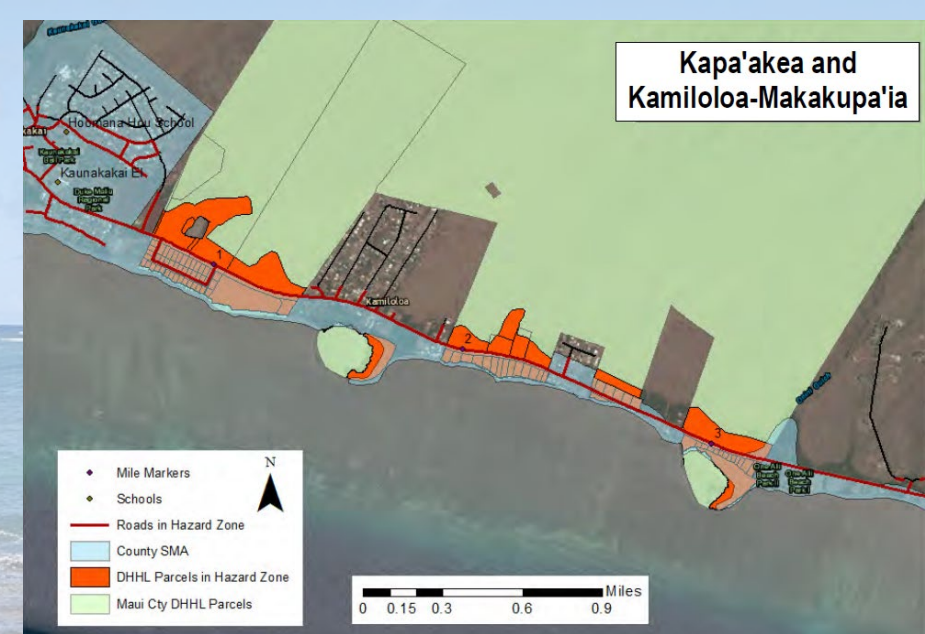


Esri Community Maps Contributors, Esri, HERE, Garmin, SafeGraph, METI/NASA, USGS, EPA, US Census Bureau, USDA, Sources: Esri, Airbus DS, USGS, NGA, NASA, CGIAR, N. Robinson, NCEAS, NLS, OS, NMA, Geodatastyrelsen, Rijkswaterstaat, GSA, Geoland, FEMA, Intermap and the GIS user community





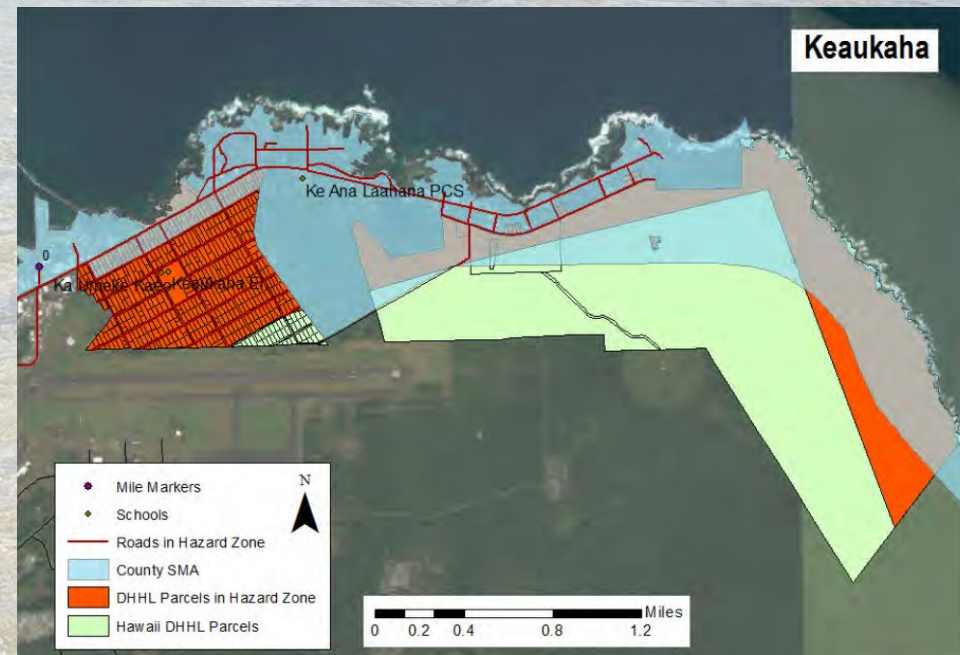
Anahola, Kaua'i



Kapa'akea, Kamiloloa-Makakupa'ia, Moloka'i



Nānākuli, O'ahu



Keaukaha, Hawai'i Island



# Project of Special Merit Proposal #1: DHHL Shoreline Guidance

## **Purpose**

Explore the feasibility of guidance or rules to guide/regulate the existing and new development along the shoreline to increase HHL coastal resiliency

## **Goals**

- Examine existing regulations and parameters of jurisdictional boundaries on HHL
- Identify pilot shoreline regions to explore the needs and procedures of shoreline guidance or rules
- Recommendations of strategies DHHL could employ to guide or regulate shoreline/coastal activities

## **Anticipated Program Change**

- DHHL-specific framework for regulating shoreline/coastal activities that will be consistent across the state (Program Change: new enforceable policies)
- Shoreline Guidance Manual for lessees

**Possible Partners:** DHHL, OPSD-CZM, DLNR-OCCL, County Planning Departments



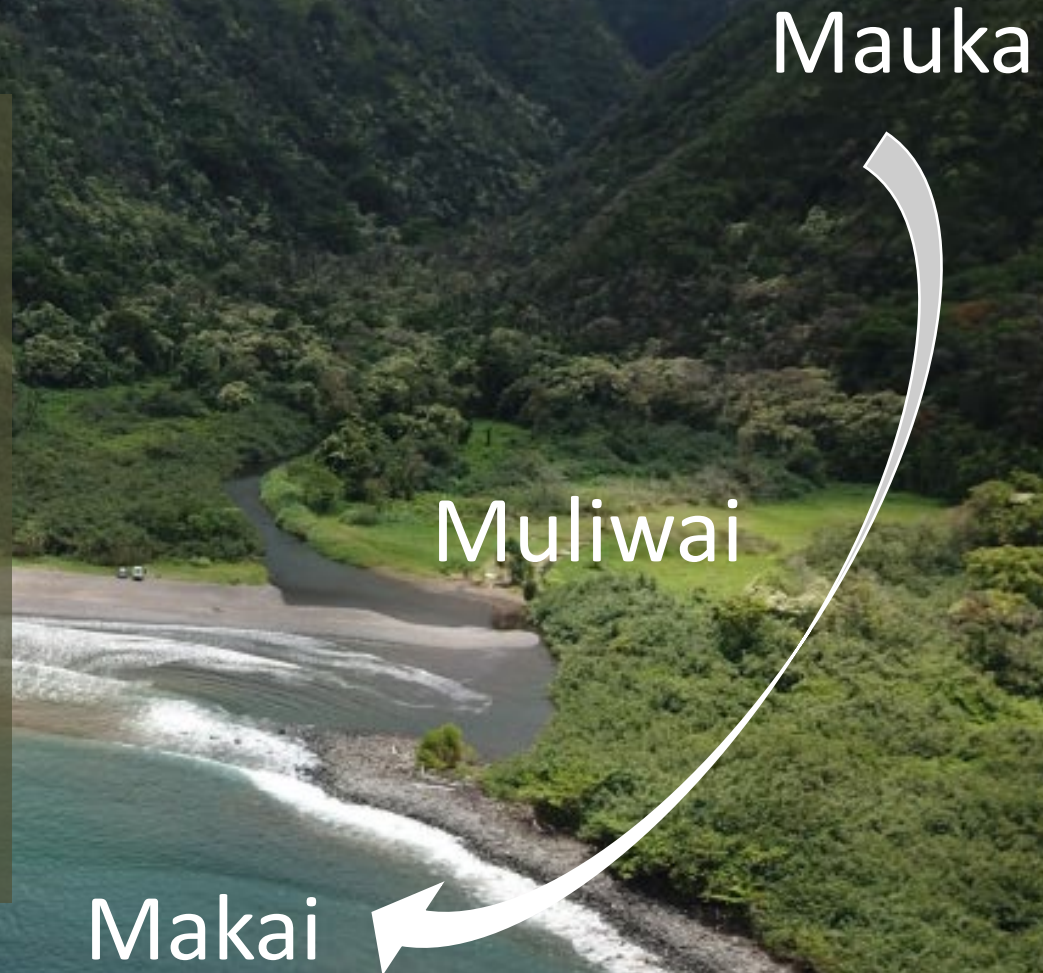
Project of Special Merit  
Proposal #2:

Muliwai (estuary)  
considerations for  
watershed restoration



# Muliwai (mulu: the remains, wai: water) = estuarine systems

- Estuaries are coastal transition areas where freshwater meets the sea
  - Characterized by brackish water
  - Bays, lagoons, river mouths, coastal wetlands, embayments, rocky intertidal
- Common estuary types in HI:
  - surface water (streams, rivers, etc.),
  - subsurface (groundwater) discharge,
  - anchialine pools





Waipi'o Valley, Hawai'i



Photo: SF Brit via Flickr

Kapo'o (Pūpūkea) Tidepools, O'ahu



Photo: Mālama Pūpūkea-Waimea

Kāne'ohe Bay, O'ahu



Photo: Eric Tessmer via Flickr

Keālia Pond, Maui



Photo: DLNR-DAR



# Why are muliwai important?

**Estuaries are one of the most productive ecosystems on Earth.**

- Serve as nursery habitat for juvenile aquatic and marine species which play an important role in the food web.
- Healthy streams contribute to productive estuaries which in turn, increases reef fish stocks.





# Threats

- Development (water diversion, construction site/stormwater runoff, etc.)
- Pollutants and excess nutrients
- Invasive species
- Heavy recreational use

# Gaps in understanding

- Whose responsibility and jurisdiction given the various forms estuary can take on?
- No estuary management plan exists for Hawai'i.
- How are streams and estuaries doing Statewide?



# Muliwai considerations to drive watershed restoration prioritization

**Purpose:** Develop new muliwai tools/products/information to inform watershed (mauka-to-makai) restoration project prioritization

**Goal:** Utilize these new tools/products/information to facilitate the pursuit of funding opportunities (e.g. Infrastructure Investment and Jobs Act) with possible expansion to development planning, permit reviews, etc.

**Anticipated Program Change:** New or revised guidelines, procedures and policy documents that are formally adopted and provide specific interpretations of enforceable CZM program policies, local government and other agencies.

**Possible Partners:** DLNR-DAR/DOFAW/CWRM/SWCD; Watershed Partnerships; UH-SOEST/Sea Grant; OHA; CNHA

# Muliwai considerations to drive watershed restoration prioritization

**Purpose:** Develop new muliwai tools/products/information to inform watershed (mauka-to-makai) restoration project prioritization

**Goal:** Utilize these new tools/products/information to facilitate the pursuit of funding opportunities (e.g. Infrastructure Investment and Jobs Act, etc.) with possible expansion to development planning, permit reviews, etc.

## **Products:**

- **Estuary GIS layer**
  - Include fishponds?
  - Ground truthing (eg. Thermal coastal imagery, etc.) informed by groundwater modeling?
- Literature review to identify gaps and needs;
- **Report** outlining management recommendations, jurisdictional responsibilities, research needs, what else?
- **Outreach materials.** What kind and who for?
- **Other products?**

## **Inform:**

- Expanded stream, & estuary monitoring
- Watershed-Based Plan development
- Holomua: Marine 30x30 Initiative
- New NERR? Waipi'o? Hilo Bay?
- Special Management Area (SMA), EA/EIS reviews, others?
- Q: Who would have a use for this?





- ORMP Updates and Announcements
  - Next Steps and Housekeeping
- 
- Next Joint Council and CWG Meeting: January 5, 2023
  - Next CWG Meeting: April 6, 2023